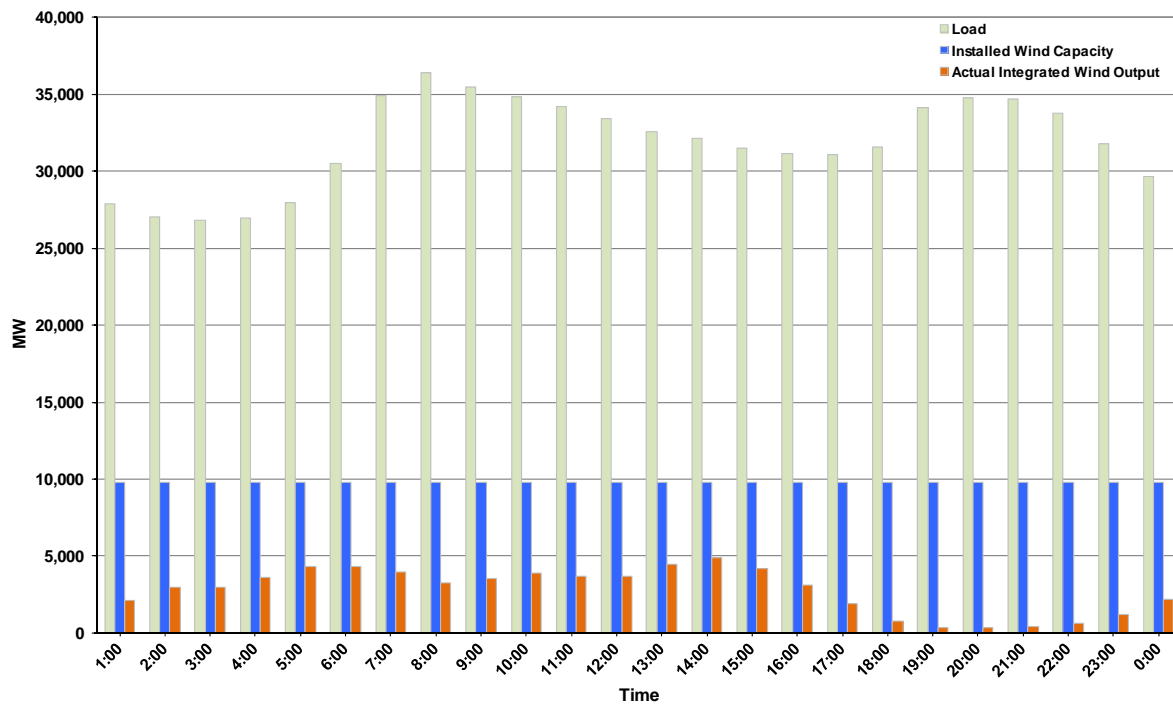




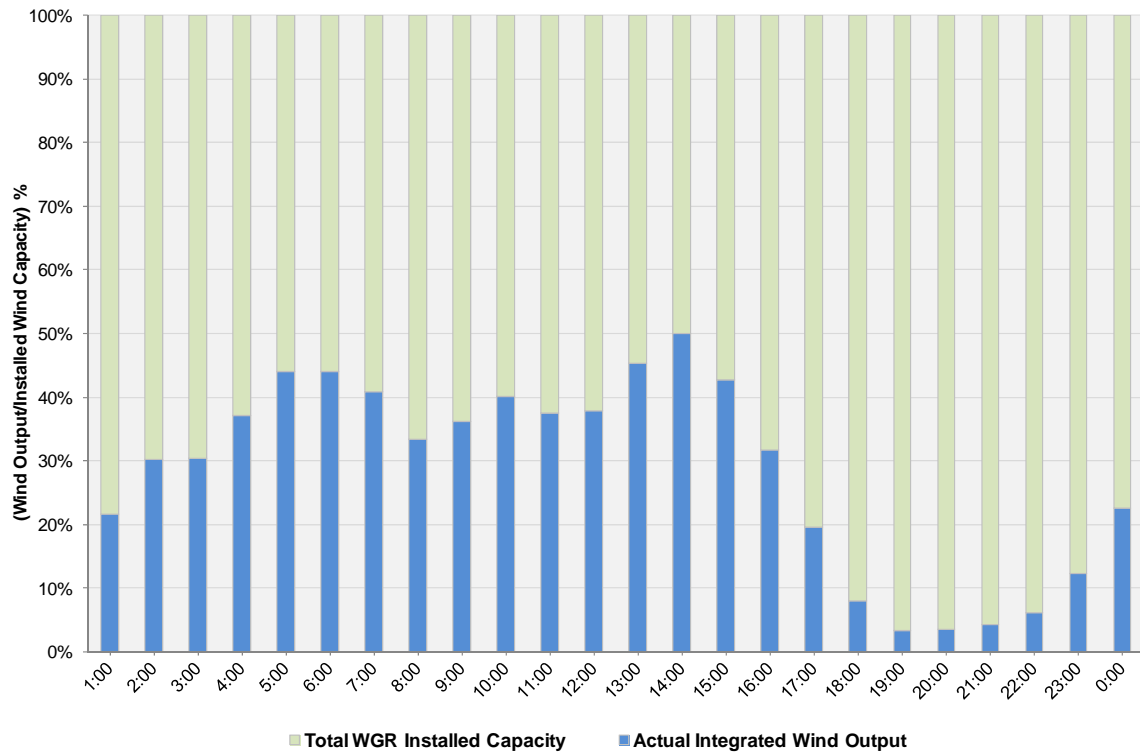
ERCOT Grid Operations Wind Integration Report: 01/26/12

Peak Load	36,416 MW
Load Peak Hour (HE)	08
Wind over Peak	3,279 MW
Wind Record 10/07/11	7,400 MW
Max Wind Value	5,103 MW
Wind Peak Time	13:32
Wind Integration %	15.95%

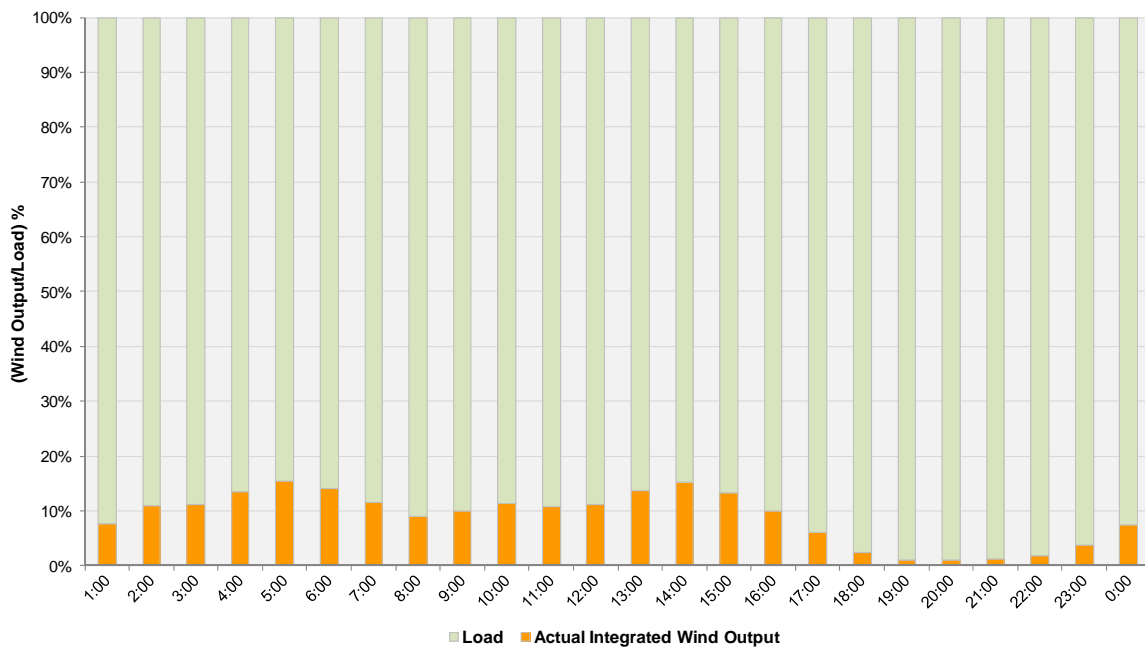
**Hourly Average Actual Load vs. Actual Wind Output
01-26-2012**



Actual Wind Output as a Percentage of the Total Installed Wind Capacity
01-26-2012



Actual Wind Output as a Percentage of the ERCOT Load
01-26-2012



ERCOT Load vs. Actual Wind Output 1/19/2012 - 1/26/2012

